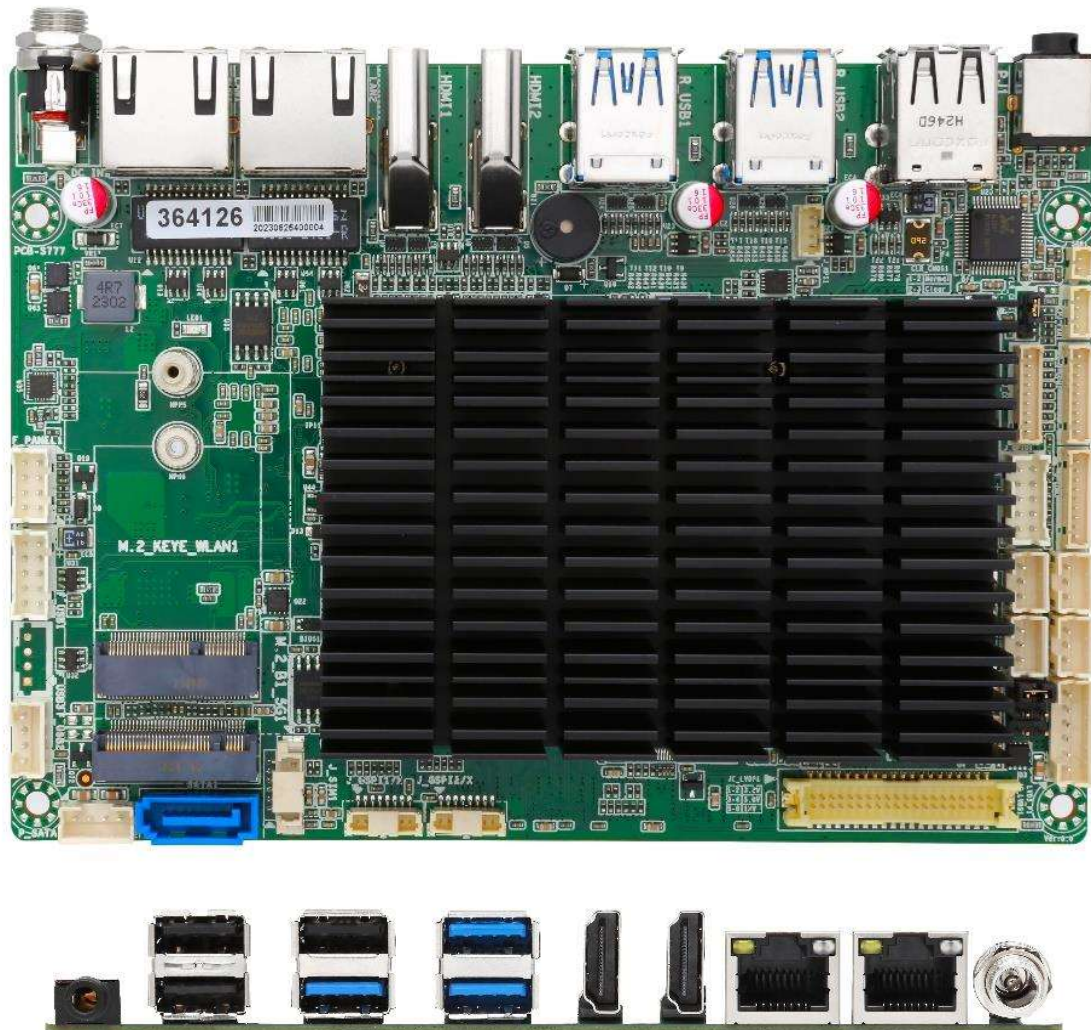


技术规格书

XSZL-6412628

武汉芯树智连科技有限公司



产品概述

本产品为边缘计算一体机主板，基于Intel® Celeron® J6412, Quad-core, clock speed 2.00 GHz, up to 2.60GHz, TDP 10W设计研发，可用于边缘计算,采集。适配Windows 7/8/10, Linux, Android等操作系统，为整体方案高性能、高稳定、高可靠的平台提供保证。

产品特点

- 采用Intel® Celeron® J6412 2.00 GHz, up to 2.60GHz, TDP 10W;
- 支持1路eDP1/LVDS (Wafer);
- 2路 HDMI (TYPE-A): max resolution up to 1920x1080 @ 60Hz。

DC12V 电源输入

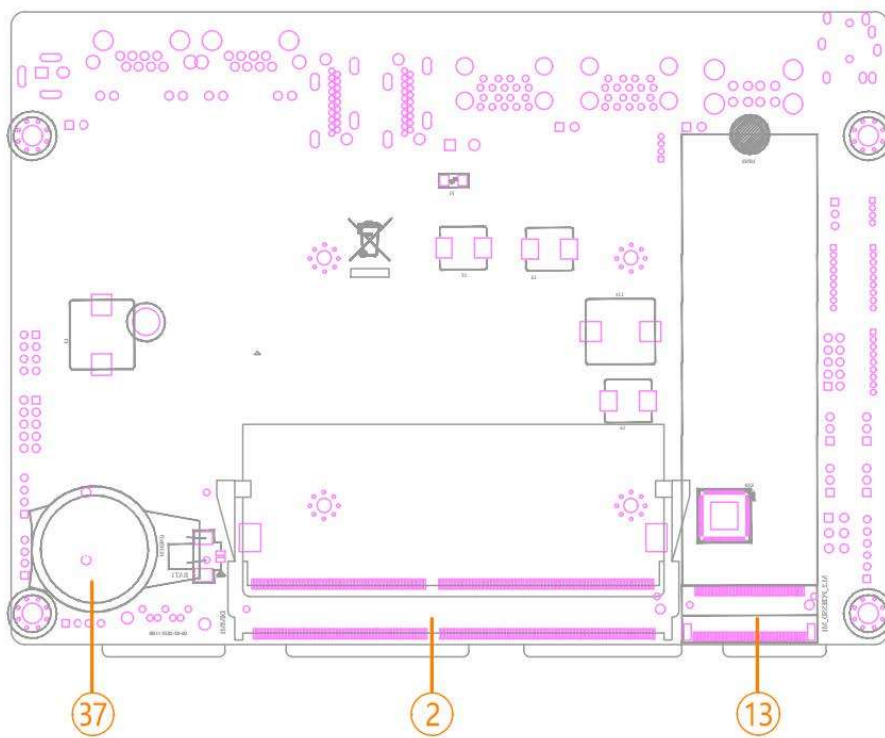
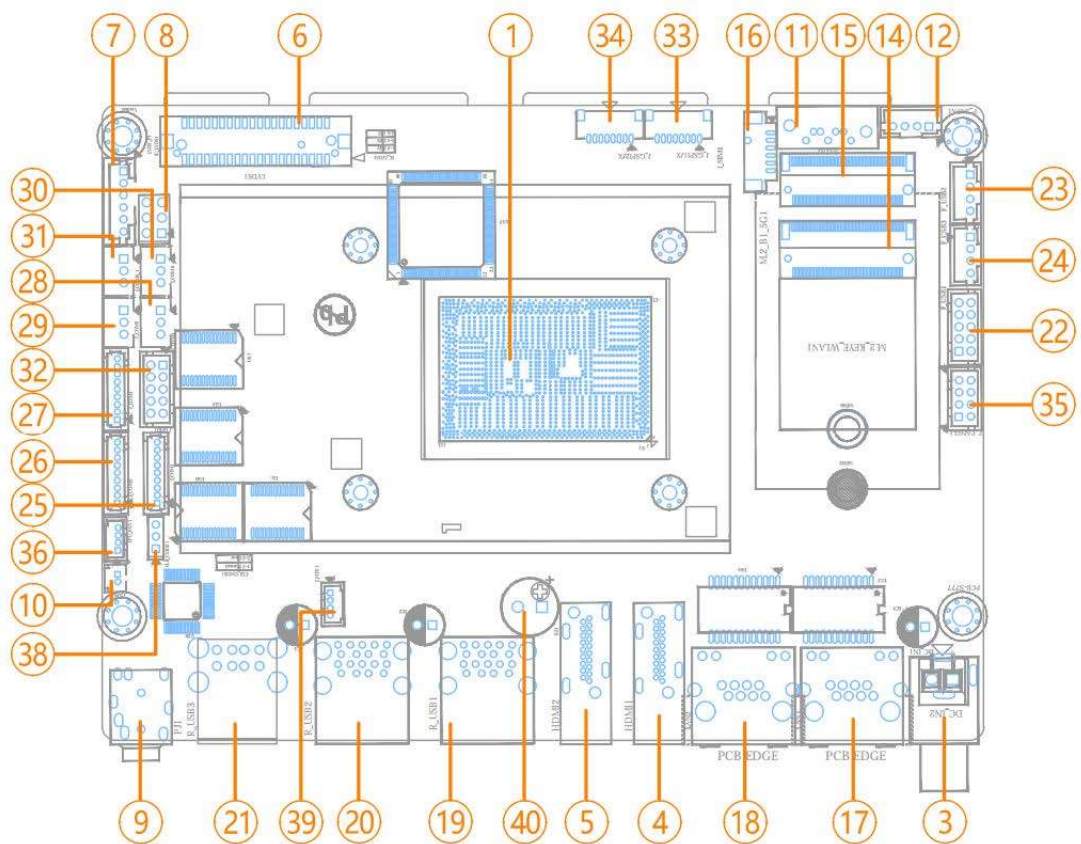
应用领域

应用于物联网、工业自动化、智能交通和医疗等工业环境边缘计算，数据采集，数据分析，提供决策依据。

产品规格参数

CPU	Intel® Celeron® J6412, Quad-core, clock speed 2.00 GHz, up to 2.60GHz, TDP 10W
内存	1 * DDR4-2666/2933/3200MHz non-ECC SO-DIMM Slot, Up to 32GB
硬盘	1 * SATA3.0 7P Connector (With 1 * SATA Power Wafer) 1 * M.2 Key-M Slot (PCIE 2x/SATA, Default PCIE 2x, Support PCIe 2x NVMe SSD, 2280)
显示	1 * eDP1/LVDS (Wafer) 2* HDMI (TYPE-A):
网口	2 * Intel® I225-V 2.5GBE LAN Chip (RJ45, 10/100/1000 Mbps)
音频	Realtek Audio HDA Codec 1 * Line-Out + MIC 2in1 Φ 3.5mm Jack 1 * Amplifier Wafer, 3W into an 4 Ω Loads
扩展	1 * M.2 Key-E Slot (PCIE+USB2.0, Support WiFi +Bluetooth, 2230) 1 * M.2 Key-B Slot (PCIE/USB3.0+ PCIE/USB3.0/SATA+USB2.0, Default USB3.0, Support 5G, 2242/3042/3052)
COM	3 * RS232 (COM1/2/3, Wafer, Full Wires) 2 * RS232/TTL (COM4/5, Wafer, 2 Wires) 1 * RS232/RS485/TTL (COM6, Wafer, 2 Wires)
I/O	3 * USB3.0 (TYPE-A, Rear IO)
	3 * USB2.0 (TYPE-A, Rear IO)
	3 * USB2.0 (Wafer, Internal)
	8 * GPIO
	1 * Front Panel Wafer 1 * CPU FAN Wafer 2 * GSPI Wafer
	1 * SIM Card Connector
	1 * SYS_FAN Connectors
供电	1 * DC12V Power Input Connector
温度范围	Operating: 0~60°C Storage: -20~75°C
系统	Windows 7/8/10, Linux, Android
BIOS	AMI UEFI BIOS (Watchdog Timer Supported)
版型	3.5 Inch (146mm * 105mm)

产品接口定义图



Jumpers / Wafers and Connectors

①	U1	CPU
②	DIMM1	DDR4 SO-DIMM Slot
③	DC_IN1	DC 12V Power Input Φ 2.5mm Jack
④	HDMI1	HDMI Upright TYPE-A Connector1
⑤	HDMI2	HDMI Upright TYPE-A Connector2
⑥	LVDS1	LVDS/eDP Signal Wafer
⑦	LVDS_P1	LVDS/eDP Backlight Control Wafer
⑧	JC_LVDS1	LVDS/eDP VDD Select Jumper
⑨	PJ1	Line-Out + MIC 2in1 Φ 3.5mm Jack
⑩	J_SPK1	Amplifier Wafer
⑪	SATA1	SATA3.0 7P Connector
⑫	P_SATA1	SATA Power Wafer
⑬	M.2_PCIESSD_M1	M.2 Key-M Slot (PCIe 2x/SATA, SupportPCIe x2 NVMe/SATA SSD, 2280)
⑭	M.2_KEYE_WLAN1	M.2 Key-E Slot (PCIe+USB2.0, Support WiFi +Bluetooth, 2230)
⑮	M.2_B1_5G1	M.2 Key-B Slot (PCIe/USB3.0+ PCIe/USB3.0/SATA+ USB2.0,Support PCIe 1x/2x NVMe/SATA SSD/4G/5G, 2242/3042/3052)
⑯	J_SIM1	SIM Card Wafer
⑰	LAN1	GBE LAN RJ45 Connector
⑱	LAN2	GBE LAN RJ45 Connector
⑲	R_USB1	Dual USB3.0 TYPE-A Connector
⑳	R_USB2	Dual USB3.0 TYPE-A Connector
㉑	R_USB3	Dual USB2.0 TYPE-A Connector
㉒	F_USB1	Front USB2.0 Wafer
㉓	F_USB2	Front USB2.0 Wafer
㉔	F_USB3	Front USB2.0 Wafer
㉕	J_COM1	COM1 Wafer
㉖	J_COM2	COM2 Wafer
㉗	J_COM3	COM3 Wafer
㉘	J_COM4	COM4 Wafer
㉙	J_COM5	COM5 Wafer
㉚	J_COM6	COM6 RS232 Wafer
㉛	J_COM6_1	COM6 RS485 Wafer
㉜	J_GPIO1	GPIO Wafer
㉝	J_GSPI1	GSPI Wafer
㉞	J_GSPI2	GSPI Wafer
㉟	F_PANEL1	Front Panel Wafer
㊱	CPU_FAN1	CPU FAN Wafer
㊲	BAT1	CMOS Battery Wafer

38	CLR_CMOS1	CMOS Clear Jumper
39	J_MPS1	Power Debug Wafer
40	BZ1	Buzzer