



芯树智连

CHINA'S IOT COMPUTING DEVICE
CUSTOMIZATION LEADER

中国物联网计算设备定制领导者

工业边缘计算主板

XSZL-35AH68

产品概述:

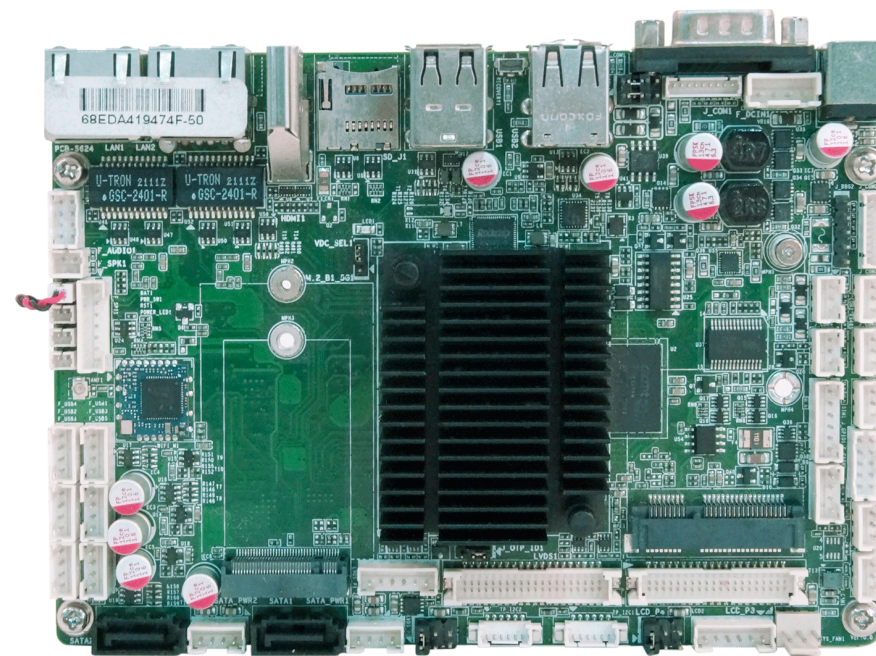
本产品为边缘计算一体机主板,基于国产ARM Rockchip RK3568, Quad-core Cortex-A55, Clock speed up to 2.0GHz设计研发,可用于边缘计算国产化方案。适配 linux ubuntu20.04, 欧拉, Android 11等操作系统,为整体方案高性能、高稳定、高可靠的平台提供保证。

应用领域:

应用于工业边缘计算,边缘AI。

产品特点:

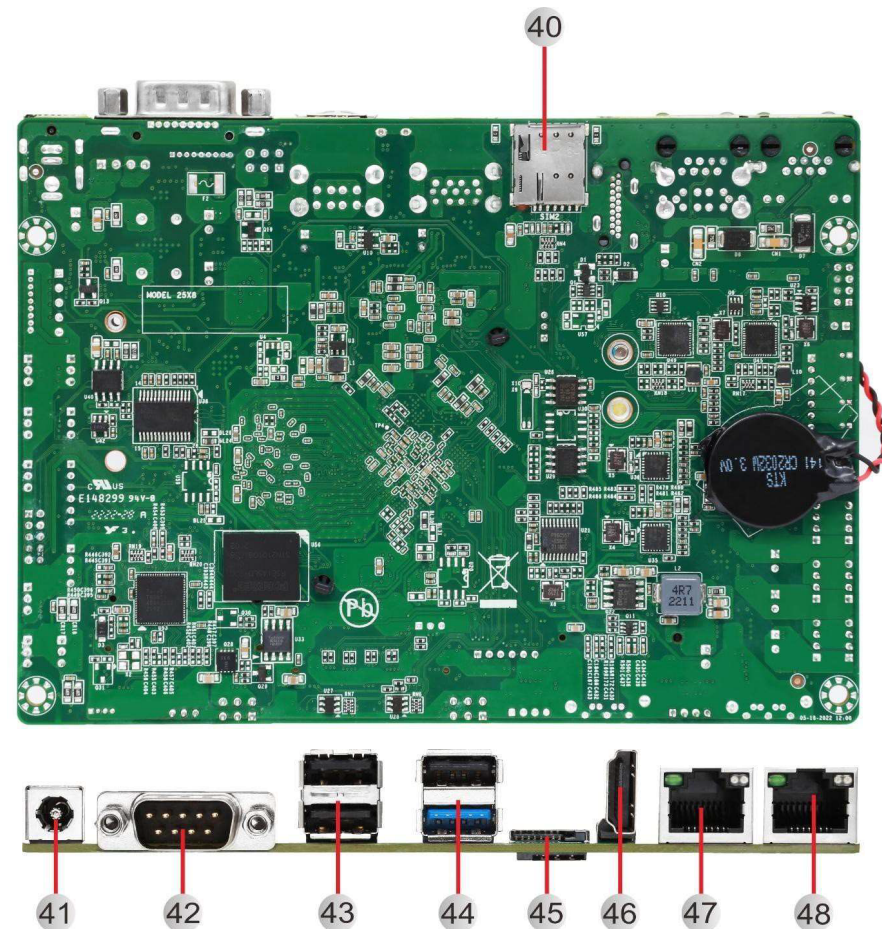
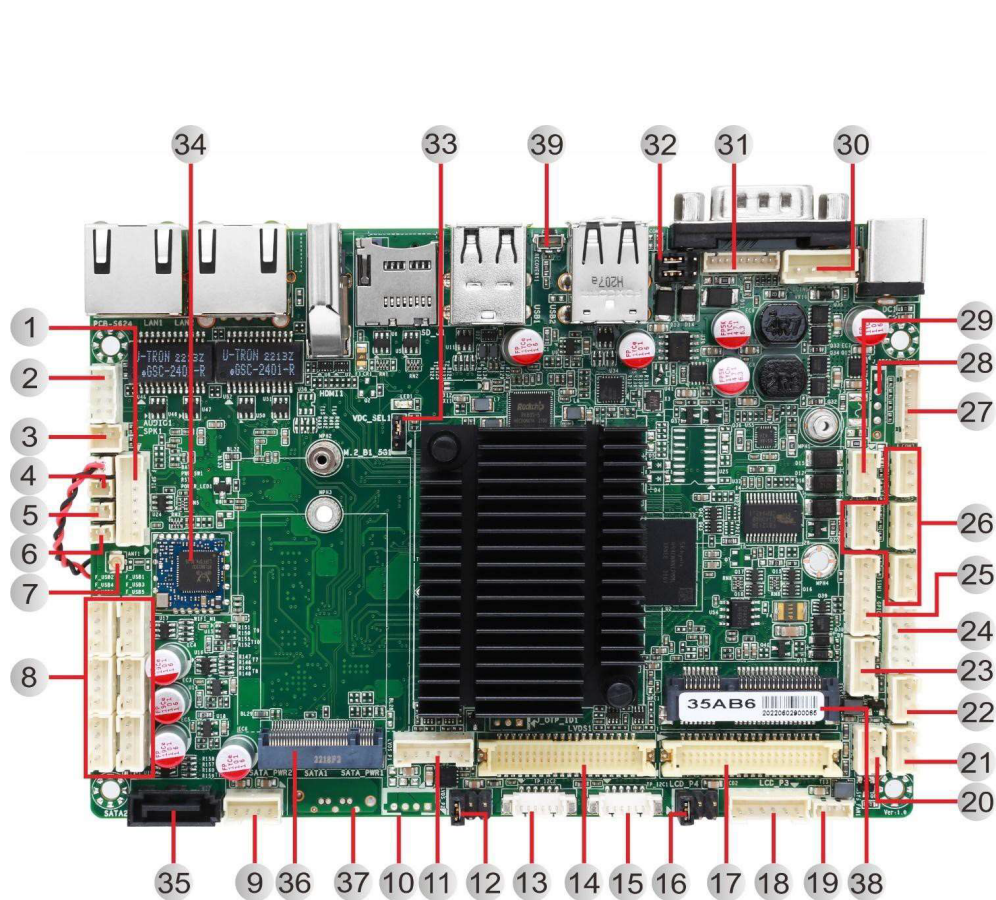
- 采用RK3568, 四核64位Cortex-A55, 主频最高2.0GHz
- 支持1T算力支持4K 60fps H.265/H.264/VP9视频解码
- 支持多屏异显
- 支持 1 个 Mini PCI-E Slot (4G/3G+WIFI), DC12V 电源输入



产品规格:

CPU	Rockchip RK3568, 四核 64 位 Cortex-A55, 主频最高 2.0GHz
内存	DDR4 3200 8G on board
存储	1*eMMC 5.1 64G、1* M.2 SATA, (2242/3052)、2 * SATA3.0、1 * TF 卡槽
声卡	1 * Front Audio Header (Line-Out + MIC)、1 * Amplifier Header
以太网	2 * 千兆网口 (10/100/1000 自适应)
显示	1 * HDMI, 1 * LVDS/MIPI (Header)
COM	1 * RS232/485 (COM1, DB9M/插针)、1 * RS232/485 (COM2, 插针)、4 * RS232 (COM3/4/5/6, 插针)
I/O	8 * GPIO ; 1 * USB3.0/OTG (TYPE-A, Rear IO) ; 3 * USB2.0 (TYPE-A, Rear IO) 6 * USB2.0 (Header, Internal) ; 1 * Mini PCI-E Slot 1 * SIM Card Header 1 * Nano SIM Card Slot) ; 1*DC 电源插头
版型	146*105mm
Wi-Fi	1 * Micro RF , Support Wi-Fi 2.4/5GHz Frequencies by default (2.4GHz Module and Bluetooth 4.2 (support BLE) optional)
系统	ubuntu20.04/欧拉/Android 11
供电	DC 12V
工作温度	-10~60 °C
存储温度	-20~60°C

产品接口定义图:



产品接口定义图:

①	F_SPI1	SPI Header
②	F_AUDIO1	Front Audio Header (Line-Out + MIC)
③	F_SPK1	Amplifier Header
④	PWR_SW1	Power Button Header
⑤	RST1	System Reset Header
⑥	POWER_LED1	Power LED Header
⑦	ANT1	Micro RF Connector
⑧	F_USB1/2/3/4/5/6	Front USB2.0 Header1/2/3/4/5/6
⑨	SATA_PWR2	SATA Power Header2
⑩	SATA_PWR1	SATA Power Header1
⑪	LVDS_P1	LVDS1/MIPI Backlight Control Header
⑫	LVDS_P2	LVDS1/MIPI VDD Select Jumper
⑬	TP_I2C2	TP I2C Header2
⑭	LVDS1	LVDS1/MIPI Signal Header
⑮	TP_I2C1	TP I2C Header1
⑯	LCD_P4	eDP/LVDS2 VDD Select Jumper
⑰	LCD2	eDP/LVDS2 Signal Header

产品接口定义图:

18	LCD_P3	eDP/LVDS2 Backlight Control Header
19	SYS_FAN1	System FAN Header
20	J_CAN2	CAN Header2
21	J_CAN1	CAN Header1
22	J_DBG1	Debug Header1
23	F_CASH1	Cash Header
24	J_GPIO1	GPIO Header
25	SIM1	SIM Card Header
26	J_COM3/4/5/6	COM3/4/5/6 Header
27	J_COM2	COM2 RS232 Header
28	J_DBG2	Debug Header2
29	J_COM2_RS485	COM2 RS485 Header
30	F_DCIN1	DC 12V Power Input Header
31	J_COM1	COM1 Header
32	JSEL1	COM1 RS232/485 Select Jumper
33	VDC_SEL1	AT or ATX Select Jumper
34	WIFI_M1	WIFI+BT Module

产品接口定义图:

35	SATA2	SATA2.0 7P Connector2
36	M.2_B1_5G1	M.2 (NGFF) Key-B Slot , (PCIE 3.0/PCIE2.0/USB3.0/SATA, 2242/3052)
37	SATA1	SATA2.0 7P Connector1
38	MPE1	Mini PCI-E Slot (WIFI+4G/3G)
39	RECOVERY1	Recovery Button
40	SIM2	Nano SIM Card Slot
41	DC1 (DC2)	DC 12V Power Input Φ 2.5mm Jack (DC 12V Power Input Thread Connector Optional)
42	COM1	COM1 DB9/M Connector
43	USB2	Dual USB2.0 TYPE-A Connector
44	USB1	Dual USB3.0+USB2.0 TYPE-A Connector
45	SD_J1	TF Card Slot
46	HDMI1	HDMI Upright TYPE-A Connector
47	LAN2 (USB3)	GBE LAN RJ45 Connector2 , (USB2.0 TYPE-A Connector Optional)
48	LAN1	GBE LAN RJ45 Connector1